

ROLL NUMBER				
-------------	--	--	--	--

SET A



INDIAN SCHOOL MUSCAT

FIRST PERIODIC TEST

BIOLOGY(044)

CLASS: XI

Time Allotted: 50mts.

12.09.2022

Max .Marks: 20

GENERAL INSTRUCTIONS:

1. Answer all the questions.
2. Draw diagrams wherever necessary.
1. Lungs are kept in thoracic chamber which are anatomically air tight. The dorsal side of the thoracic chamber is provided with:
 - a) Sternum
 - b) Vertebral column
 - c) ribs
 - d) rib muscles

OR

Assertion (A) Bundle of His is a part of auto excitable tissue.

Reason (R) This region comprises of cardiac tissue that can generate impulse on its own at a frequency less than SA node.

- (a) Both A and R are true and R is the correct explanation of A.
 - (b) Both A and R are true, but R is not the correct explanation of A.
 - (c) A is true, but R is false
 - (d) A is false, but R is true
2. Define breathing. 1
 3. What is the plasma without clotting factors called? 1

JP

4. Various types of white blood cells are available in the blood plasma. Which is the most abundantly available white blood cells? 1
5. Give the condition of the following muscles during expiration. 2
 - (i) Diaphragm muscles.
 - (ii) Internal intercostal muscles.
6. State the factors affecting the oxygen-haemoglobin binding. 2
7. A fish's heart pumps only deoxygenated blood, why? 2

OR

Briefly discuss the atrial systole.

8. Can a person with AB blood group donate blood to a person with A blood group? Reason out your answer. 2
9. What is the blood pressure for a person who is under hypertension? How does it affect a person? 2
10. Draw a labelled diagram of section of alveolus with pulmonary capillary. 3

OR

Describe the transport of Carbon di oxide by blood.

11. Arthropods have open circulatory system whereas mammals have closed circulatory system. How do these two circulatory system differ? Which of the two system is advantageous and why? 3

End of the Question Paper

ROLL NUMBER				
-------------	--	--	--	--

SET B



INDIAN SCHOOL MUSCAT

FIRST PERIODIC TEST

BIOLOGY(044)

CLASS: XI

Time Allotted: 50mts.

12.09.2022

Max .Marks: 20

GENERAL INSTRUCTIONS:

1. Answer all the questions.
2. Draw diagrams wherever necessary.

1. Lungs are kept in thoracic chamber which are anatomically air tight . The ventral side of the thoracic chamber is provided with: 1
 - a) Sternum
 - b) Vertebral column
 - c) ribs
 - d) rib muscles

OR

Assertion (A) Trachea and bronchioles are supported by cartilaginous ring.

Reason (R) Trachea can collapse during expiration.

- (a) Both A and R are true and R is the correct explanation of A.
 - (b) Both A and R are true, but R is not the correct explanation of A.
 - (c) A is true, but R is false.
 - (d) A is false, but R is true.
2. How do aquatic arthropods breathe? 1
 3. Name the blood cells which lack nucleus. 1
 4. State the two types of blood grouping in humans. 1

5. Enlist the first four steps of respiration in human. 2
6. How is respiration regulated? 2
7. How is Coronary Artery Disease caused? State how does it affect us? 2

OR

Show the formation and spread of heart beat in a flow chart only.

8. State one function of a) Basophils b) Eosinophils 2
9. Explain the process of Rh antibodies formation in Rh negative mother. How does it affect the foetus in subsequent pregnancy? 2
10. Diffusion of gases occurs in the alveolar region only and not in the other parts of respiratory system. Why? 3

OR

Draw a simple, labelled diagram of the human respiratory system.

11. Give one difference between heart failure , cardiac arrest and heart attack. 3

End of the Question Paper



INDIAN SCHOOL MUSCAT

FIRST PERIODIC TEST

BIOLOGY(044)

CLASS: XI

Time Allotted: 50mts.

12.09.2022

Max .Marks: 20

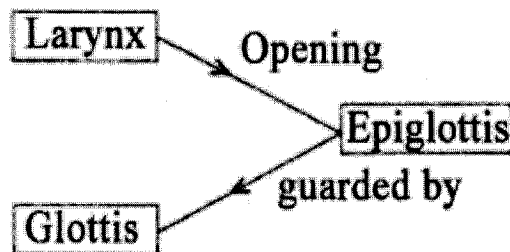
GENERAL INSTRUCTIONS:

1. Answer all the questions.
2. Draw diagrams wherever necessary.

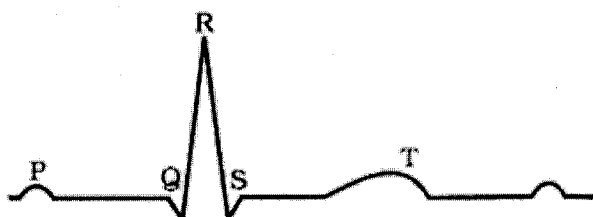
1. Lungs are kept in thoracic chamber which are anatomically air tight. The lateral side of the thoracic chamber is provided with: 1
a) Sternum b) Vertebral column c) ribs d) rib muscles
2. Which part is the common passage for food and air in the human respiratory system? 1
3. Megakaryocytes break down to form blood platelets. The other name of the blood platelets is..... 1

OR

Analyze the concept map given below and reconstruct it by correcting the errors.



4. When foetus Rh positive blood is exposed to Rh negative mother, a condition *erthroblastosis foetalis* develops. How could it be avoided? 1
5. Write two industries where workers are likely to suffer from occupational respiratory disorders. How does it affect them? 2
6. Where are the receptors for detecting change in concentration of hydrogen ions and CO₂ are located in our body? How to they bring about changes in the respiratory pattern? 2
7. Diagrammatic representation of a standard ECG is given below 2



- a) What does QRS complex denotes?
- b) Mention the significance of ECG.
8. Stethoscope is an instrument which is used to detect the sounds of the heart. 2
 - a) Mention the two sounds of the heart.
 - b) Give the causes of heart sound.
9. What is stroke volume? What is its relation with cardiac output? 2

OR

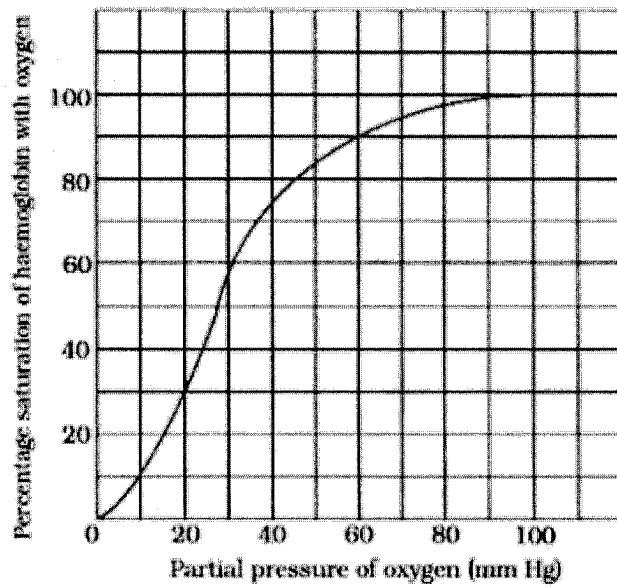
Which blood group is called a universal receptor and why?

10. How is tissue fluid formed? Write down the functions of lymph. 3

OR

Draw a labelled diagram of section of human heart.

11. i) Prepare an equation for a chemical reaction using the following components. 3
Carbonic anhydrase, Carbonic acid, water, carbon dioxide.
- ii) Identify the graph given below.



- iii) List the factors responsible for the formation and dissociation of oxyhaemoglobin.

End of the Question Paper